



METSÄHALLITUS

PAME

Protected Area Management
Effectiveness for Parks & Wildlife
Finland

Matti Tapaninen
Metsähallitus Luontopalvelut



Arviointiryhmä

Sue Stolton / Nigel Dudley

- Arviointiryhmän puheenjohtajuus ja työn koordinointi
- Työskentelevät yrityksessä Equilibrium Research (Wales, Iso-Britannia)
- Yli 30 vuoden kokemus suojeluaeiden hoidon tehokkuuden ja vaikuttavuuden arvioinneista maissa, keskeisiä käytettävän menetelmän kehittäjiä.

Ben Ross

- Työskentelee NatureScot organisaatiossa, jonka tehtävät vastaavat Luontopalvelujen toimintaa Suomessa
- Vastuualueena johtaa suojelualueet, innovaatiot ja aineistot osastoa NatureScotissa
- Tuo Luontopalvelujen PAME arviointiin laajemmin vertaisorganisaation näkökulmaa

Michael Hosek

- Työskennellyt Tsekín ympäristöhallinnossa
 - Tehtävinä esimerkiksi Natura 2000 verkoston toteuttaminen, biodiversiteettisopimuksen (CBD) neuvottelut, suojelualueisiin liittyvä seuranta
- Lisäksi toiminut maailman luonnonsuojeluliiton (IUCN) neuvostossa ja Europarc Federationin presidenttinä
- Tuo arviointiin erityisesti Natura 2000, CBD, kansainvälisen toiminnan ja suojelualueverkoston hoidon osaamista

Arviointiryhmä

Yu-Fai Leung

- Professori, Carolina State University (suojelualueiden hoito, luonnon virkistyskäyttö ja matkailu)
- Pitkä kansainvälinen kokemus esimerkiksi suojelualuiden käytön kestävyiden ja vaikuttavuuden tutkimuksen ja seurannan parissa
- Toimittanut IUCN ohjeistuksen kestävä matkailun edistämiseen ja koordinoi suojelueiden matkailukäytön työryhmää.
- Tuo arviointiin erityisesti luonnon virkistyskäytön ja matkailun näkökulmaa

Naira Dehmel

- Väitöskirjatutkija, King's College London
- Työskentelee Equilibrium Researchin kautta, arvioinnissa tehtävänä tarkastella suojelualueiden hallintoa

Arviointiryhmä

Petri Ahlroth

- Työskentelee Ympäristöministeriössä. Lisäksi pitkä työhistoria Suomen Ympäristökeskuksessa sekä Maa- ja metsätalousministeriössä
- Noin 30 vuoden työhistoria luonnonsuojelun parissa
- Toiminut useissa kansainvälisissä suojelualueiden hoitoon ja hallintoon liittyvissä projekteissa
- Tuo arviointiin erityisesti kotimaisen asiantuntijan näkemyksen suojelualueiden hallinnon näkökulmasta

Ari-Pekka Auvinen

- Työskentelee Suomen ympäristökeskuksessa
- Kotimainen asiantuntija (jakaa tehtävän SYKE:ssä yhdessä Kari Lahden kanssa)
- Erityisalueena arvioinnissa: luonnon monimuotoisuuteen liittyvä seuranta, Biodiversiteettiohjelmien toteutuksen vaikuttavuus (Luontopalvelujen näkökulmasta) ja yksityiset suojelualueet

Kari Lahti

- Työskentelee Suomen ympäristökeskuksessa
- Lisäksi työskennellyt Toimittajana, Matkailuyrittäjänä, Metsähallituksen Luontopalveluissa ja Luonnontieteellisellä museolla
- Kotimainen asiantuntija (jakaa tehtävän SYKE:ssä yhdessä kanssa)

Sue Stolton and Nigel Dudley

Nigel and Sue are partners in Equilibrium Research. Over the last 30-years we have worked on a wide range of issues in many countries, finding unifying themes that run through the environmental and social issues which we are passionate about. Based in mid-Wales in the UK when not working the mountains call us ...

Protected area management effectiveness (PAME) has been a major theme of our work since the 1990s. We collaborated on the IUCN WCPA best practice on PAME (two editions, 2000/2006). We helped develop a series of tools, such as the METT or Management Effectiveness Tracking Tool (2003 plus) now used in thousands of protected areas worldwide and we wrote a best practice manual in applying the METT (two editions: 2016/2020). The Enhancing our Heritage project developed a detailed assessment system for UNESCO natural World Heritage. Sue worked with UNESCO to help develop the World Heritage Periodic Reporting Format and with IUCN as an adviser on the World Heritage Outlook. Equilibrium has undertaken state of the park reports in Finland (in the original assessment in 2004), South Korea, Colombia and Bhutan; assessed all biosphere reserves in Viet Nam; assessed or built capacity in PAME globally including in Cambodia, Kazakhstan, Kenya, Malawi, Tanzania and Turkmenistan. With Conservation Assured, we surveyed management needs of over 100 tiger reserves, published as Safe Havens (2018). We have worked with the CBD to bring protected area assessments into global policy and most recently, been working with the UN World Conservation Monitoring Centre to develop international reporting on PAME.

[Twitter](#) | www.equilibriumresearch.com



Ben Ross



Personal introduction

I studied Zoology at Glasgow University before gaining a PhD in Ornithology at Glasgow. I've worked on a number of different conservation projects in the UK and overseas before and during my 20+ year career with NatureScot (formerly Scottish Natural Heritage).

Employment

I work with NatureScot as the Head of Protected Areas, Innovation and Data. I am based in Great Glen House, NatureScot Headquarters, in Inverness, Scotland.

Current areas of work include overseeing how Scotland will implement 30x30 and reformation of Protected Areas and our approach to designation, monitoring and management. I also oversee our work to deliver our Data Strategy and how to use innovative technologies to deliver our work.

Key areas of expertise

Protected areas, protected species, wildlife management and conflict, innovative technologies and strategic approaches to environmental data capture, management and use.

Links www.nature.scot @nature_scot



Michael Hošek

Personal motto: "Try to do more than required"

Passionate to combine strategic and field activities ... and beekeeping because producing something tangible by hands is healthy

Key work tasks

2002-2013: Czech Nature Conservation Agency - from 2005 Deputy Director resp. for the implementation of the EU Nature Directives incl. Natura 2000 designation, country-wide monitoring scheme, international affairs

2013-2014: Czech Ministry of the Environment - Director General for Nature Conservation

2014 – ongoing: consultancy (www.weareintegroup.com), project management, etc.

2012-2021 IUCN Councillor

2014-2021 EUROPARC Federation vice President, from 2021 President

Areas of expertise

Protected Areas, Natura 2000, biodiversity monitoring and assessments, strategic planning, EU enlargement process, capacity building, facilitation of stakeholders



Yu-Fai Leung

Personal introduction

I am a full professor in the Department of Parks, Recreation and Tourism Management at North Carolina State University, Raleigh, North Carolina, U.S.A.. I received my first two degrees in geography and a Ph.D. in forestry (natural resource recreation). My research in the past 25 years have focused on the sustainability challenges of visitor use in national parks, protected and conserved spaces, and wilderness areas, from local to global scales.

Key work tasks

- 2020-present: Co-lead Antarctic Tourism Action Group, Scientific Committee on Antarctic Research
- 2018: Editor-in-Chief, IUCN Best Practice Guidelines for Tourism and Visitor Management in Protected Areas (<https://portals.iucn.org/library/node/47918>)
- 2017-present: Coordinator, Biodiversity Working Group, IUCN WCPA Tourism and Protected Areas Specialist Group

Key expertises

Protected area tourism; indicator and monitoring protocol development; management efficacy evaluation; Antarctic tourism issues

Links to web and social media

<https://go.ncsu.edu/leung>

<https://www.linkedin.com/in/yufaileung/>

Twitter: @yfleung_nc



Naira Dehmel

I am a PhD researcher in conservation governance at King's College London, and alongside work with the International Institute for Environment and Development on supporting governance and equity assessments in conservation areas around the world, using a tool called [SAGE](#). I was invited to contribute to your project by advising on how to consider elements of governance (and equity) in this planned assessment and/or your future work. I'm excited - thank you for having me!

How I came to this project

I most recently worked with Equilibrium Research on combining SAGE with METT for use in conservation areas and Indigenous Territories across Latin America. Most of my applied work on conservation governance has been in Bolivia, Colombia and Mozambique. I'm really happy to now, even if only for short, turn to Europe.

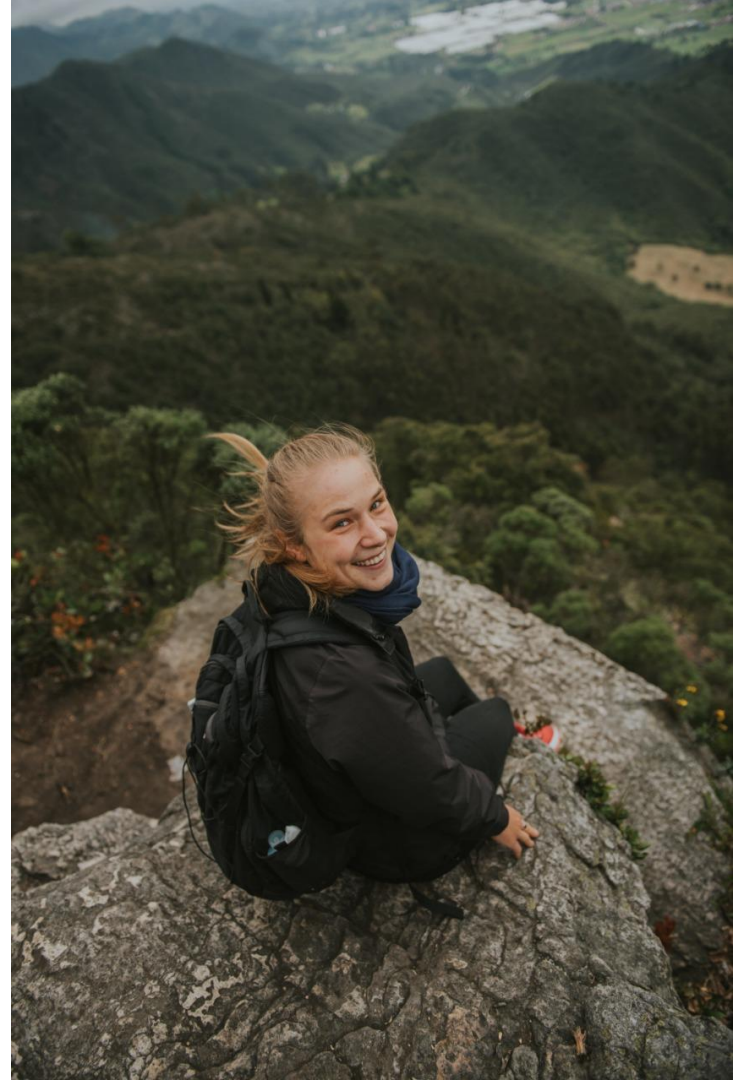
Areas of expertise & learning

Governance of protected areas, OECMs and ICCAs:

- Theory of governance: institutions, equity and power,
- Assessments of governance and equity (SAGE)
- Participatory action research

Web-links

[@nairadehmel](#) | [KCL webpage](#)



Petri Ahlroth

I'm an ecologist, PhD in Biology. I have nearly three decades long working experience in the field of nature conservation. I have worked both at the Ministry of Forestry and Agriculture and at the Ministry of Environment. However, for the last ten year I worked as a director of the Biodiversity Center at the Finnish Environment Institute (SYKE).

My current position at the Ministry of Environment is Senior Environmental Advisor and I'm responsible especially on questions related to the species protection.

During the last six years I have been leading projects concerning capacity building of nature conservation administration in four countries in the Balkan peninsula, Caucasus and the Near East.

Insects have always been close to my heart. My entomological activity has started already in 1973 at the age of four!



Ari-Pekka Auvinen

Personal introduction

Passionate about biodiversity. I work in many roles ranging from my job as researcher at the Finnish Environment Institute to acting as conservation officer in the biggest national area-based conservation NGO, The Finnish Natural Heritage Foundation, and being a committed voluntary worker in the field, especially as relates to the monitoring of bird populations.

Key work tasks

- Development of national biodiversity indicators
- Expert secretary of the National Biodiversity Working Group
- Member of Finland's delegation in the CBD negotiations

Key areas of expertise

- Holistic view of Finland's biodiversity policies and their effectiveness
- Biodiversity monitoring
- Privately-owned protected areas

www.luonnontila.fi



Kari Lahti

I am a biodiversity informatics professional with MSc in biology. My working history is quite diverse from protected area practitioner to digitalisation director as my current position (2023) at the Finnish Environment Institute. After over 10 active years at the Parks&Wildlife Finland, I worked 8 years as a director of Biodiversity Informatics Unit at the Finnish Museum of Natural History Luomus at the University of Helsinki. I have been working quite intensively within nature conservation landscape nationally as well as internationally e.g. as a secondee for IUCN headquarters in Switzerland under the protected areas programme and representing Finland as a national focal point for UN Convention on Biological Diversity (CBD) Programme of Work on Protected Areas (PoWPA). I have also been working as a verifier and a member of the steering group at EUROPARC Federation's transboundary certification "Following Nature's Design"; I am a huge supporter for open science and open data and thus focus on mobilising all available biodiversity related data benefiting cutting edge science, research and good decision-making in the field conservation and sustainable use of natural resources. One of the key objectives is sharing the data according to FAIR principles.



<https://orcid.org/0000-0003-0440-2069>

@KariLahti1

[linkedin.com/in/kari-lahti-9662bba](https://www.linkedin.com/in/kari-lahti-9662bba)



The logo consists of two stylized triangles pointing towards each other, one green on top and one blue on the bottom.

METSÄHALLITUS

www.metsa.fi



@metsahallitus_forststyrelsen



@metsahallitus